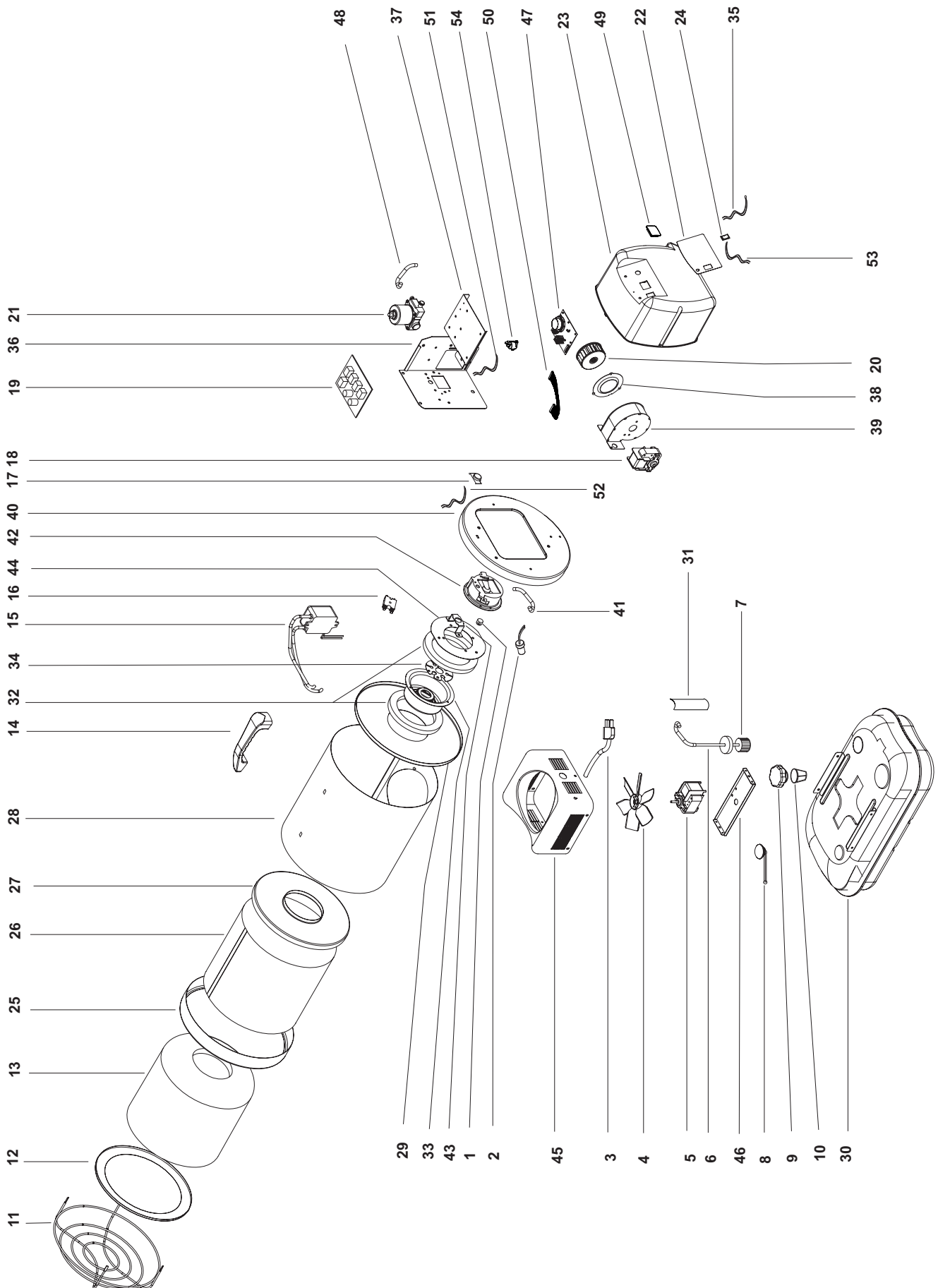


From Serial Number: 31900001 to 31902720

Edizione 2011  
Rev. B



<b>Pos.</b>	<b>Code NR</b>	<b>Description</b>
1	4031.536	Nozzle
2	4615.433	Photocell Ass'y
3	4615.436	Power Cord
4	4615.411	Cooling Fan Blade
5	4615.412	Cooling Fan Motor
6	4615.428	Intake Hose (FUEL)
7	4615.430	Oil filter Ass'y
8	4615.419	Fuel Gauge Ass'y
9	4615.417	Fuel Cap Ass'y
10	4615.418	Fuel filter Ass'y
11	4615.439	Safety Guard
12	4615.423	Heating Plate
13	4615.407	Chamber/Insulator
14	4615.422	Handle
15	4615.424	Ignitor
16	4615.414	Double Electrode
17	4615.442	Thermostat
18	4615.404	Blower Motor
19	4615.432	PC Board Ass'y
20	4615.403	Blower Fan
21	4615.415	Electronic Pump
22	4615.453	Label for Cover
23	4615.401	Back Cover
24	4615.437	Power Switch
25	4615.416	Front shell Ring
26	4615.408	Combustion Chamber
27	4615.438	Rear Cover
28	4615.440	Shell
29	4615.400	Air Guard
30	4615.421	Fuel Tank Assy
31	4615.435	Pipe Cover
32	4615.426	Insulator Pad
33	4615.413	Diffuser
34	4615.444	Turbo disk
35	4615.443	Thermyster
36	4615.431	P.C.B Base
37	4615.410	Display Board Base
38	4615.425	Inlet
39	4615.406	Casing Blower
40	4615.402	Back Plate
41	4615.420	Fuel Pipe Ass'y
42	4615.405	Burner Head
43	4615.434	Photocell Bracket
44	4615.427	Insulator Plate
45	4615.409	Combustion Chamber Support
46	4615.429	Motor Support
47	4615.441	Display Board
48	4615.445	Return Fuel Pipe
49	4615.446	Display Cover
50	4615.447	Complete Wire Board-Display
51	4615.448	Complete Wire Anti-Tilting Switch
52	4615.449	Complete Wire Overheat Thermostat
53	4615.450	Complete Wire Switch
54	4615.451	Anti-Tilting Switch